

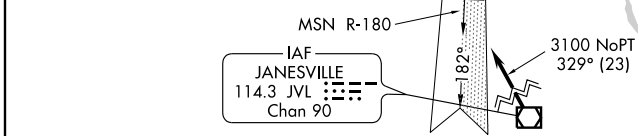
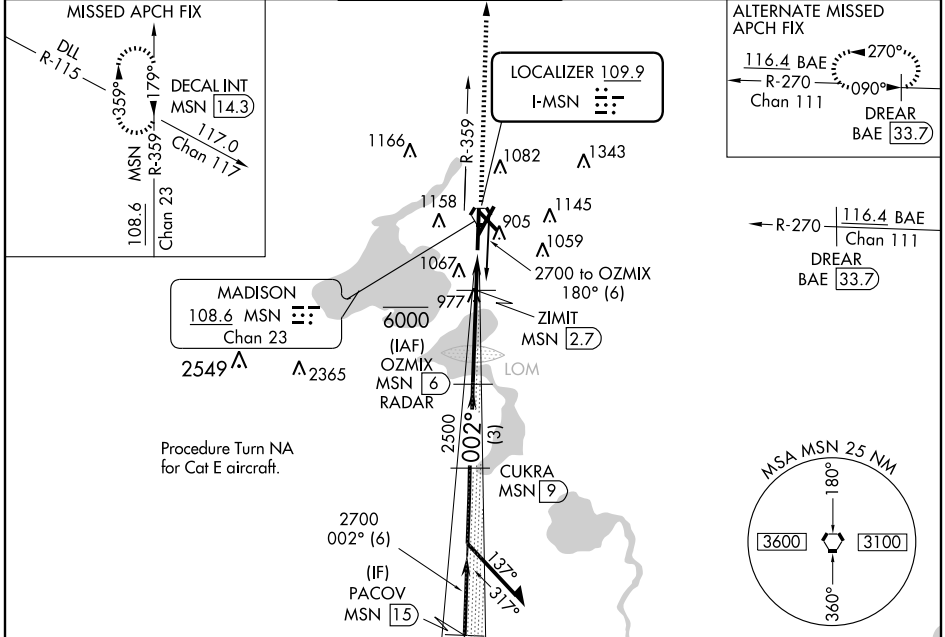
LOC I-MSN 109.9	APP CRS 002°	Rwy Idg 8005 THRE 862 Apt Elev 887
---------------------------	------------------------	--

ILS or LOC/DME RWY 36

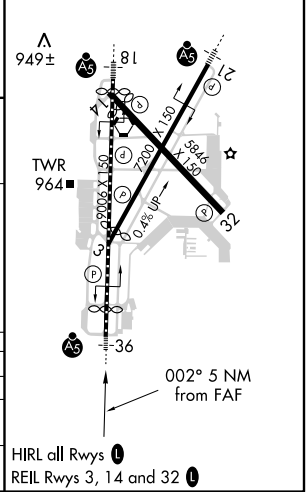
MADISON / DANE COUNTY RGNL-TRUAX FIELD (MSN)

ASR	** RVR 1800 authorized with use of FD or AP or HUD to DA. For inoperative MALS/R, increase S-LOC Cat C, D and E visibility to 1 mile. DME or Radar required.	MALS/R	MISSED APPROACH: Climb to 2700 on MSN VORTAC R-359 to DECAL INT/MSN 14.3 DME and hold.
------------	---	--------	--

ATIS 124.65 278.3	MADISON APP CON * 135.45 343.7	MADISON TOWER * 119.3 (CTAF) 0 257.8	GND CON 121.9 348.6	CLNC DEL 121.62	UNICOM 122.95
-----------------------------	--	--	-------------------------------	---------------------------	-------------------------



ELEV 887	THRE 862
----------	----------



CATEGORY	A	B	C	D	E
S-ILS 36	**1062/24 200 (200-½)				
S-LOC 36	1240/24	378 (400-½)	1240/35		378 (400-¾)
CIRCLING	1420-1	1460-1	1460-1½	1460-2	1700-3
	533 (600-1)	573 (600-1)	573 (600-1½)	573 (600-2)	813 (900-3)

EC-3, 13 DEC 2012 to 10 JAN 2013

EC-3, 13 DEC 2012 to 10 JAN 2013